

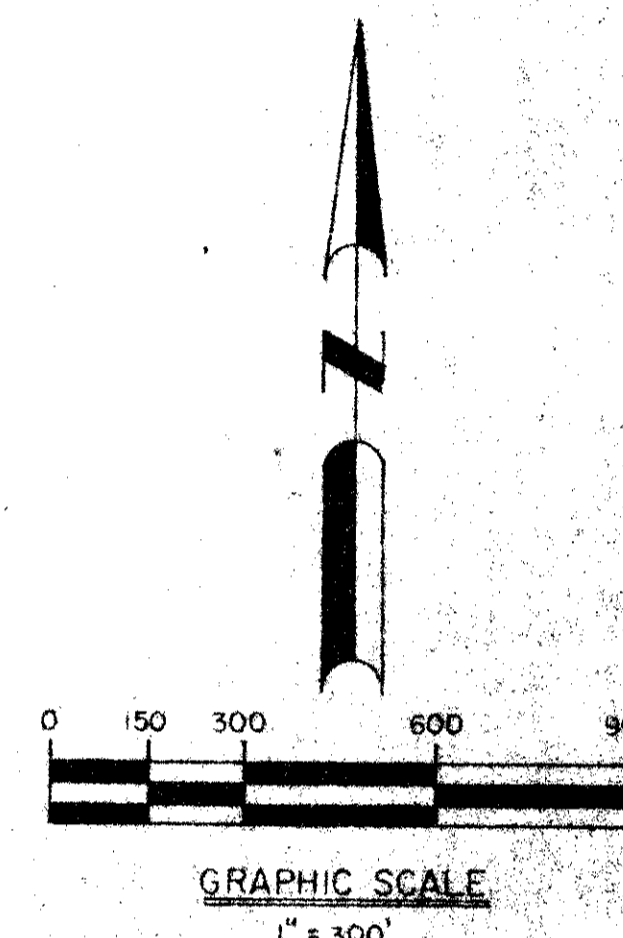
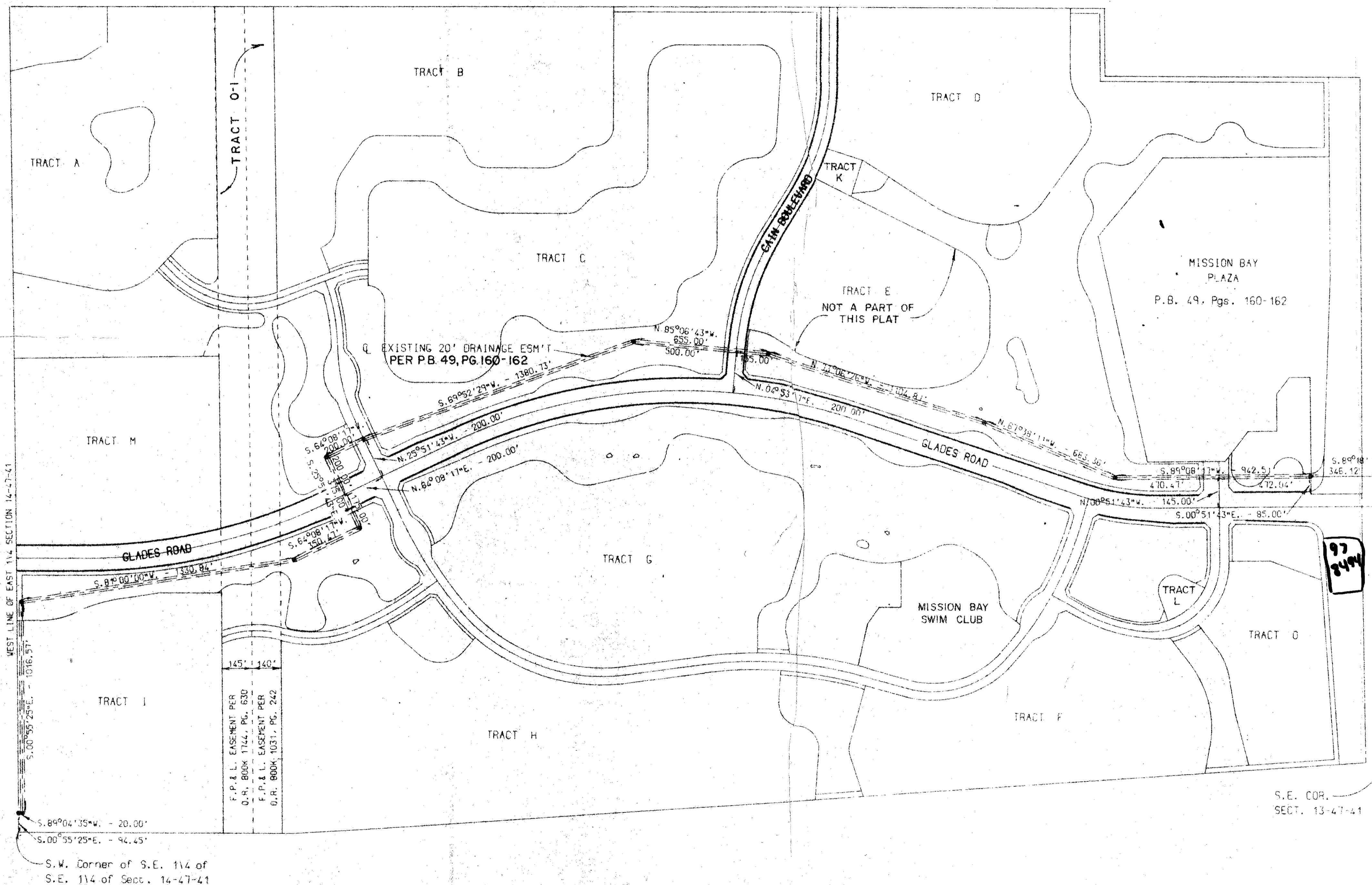
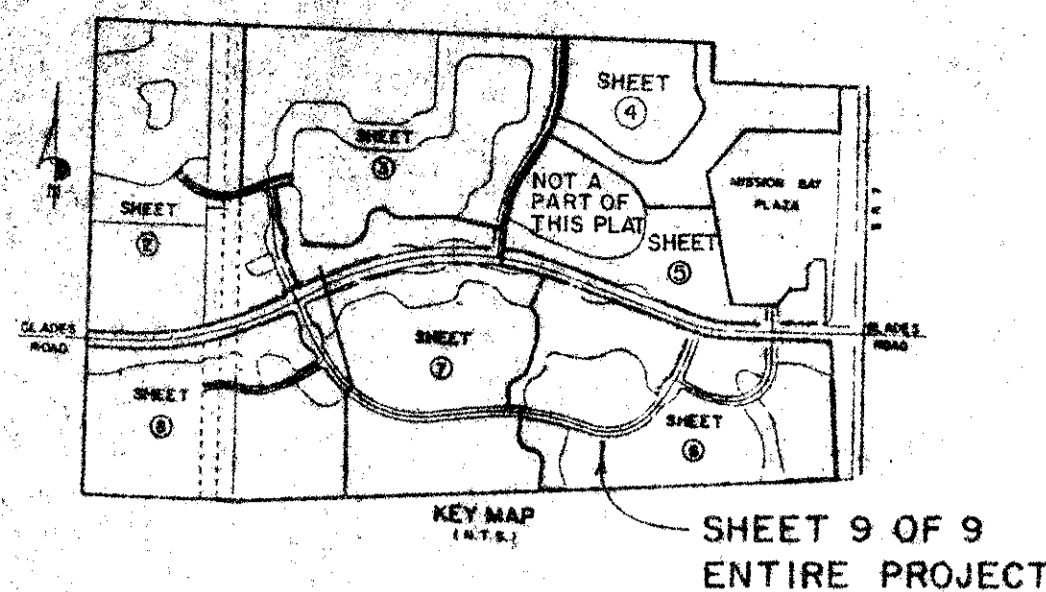
DRAWING NUMBER
53/120

MISSION BAY

120

A P.U.D.

IN SECTIONS 13 & 14, TOWNSHIP 47 SOUTH, RANGE 41 EAST, PALM BEACH COUNTY, FLORIDA, BEING A PORTION OF THE EAST 1/4 OF SECTION 14 AND A REPLAT OF A PORTION OF TRACTS 7, 8, 9, 10, 23, 24, 33, 34, 40, 41, 49, 50, 51, 55, 56, 57, 63, 64, AND ALL OF TRACTS 6, 11, 12, 21, 22, 25-28, 35-39, 42-48, 52-54 & 58-62 INCLUSIVE OF THE PLAT OF FLORIDA FRUIT LANDS COMPANY'S SUBDIVISION NO. 2 OF SECTION 13-47-41, AS RECORDED IN PLAT BOOK 1, PAGE 102, PALM BEACH COUNTY, FLORIDA.



NOTE: THIS SHEET PROVIDED TO SHOW RELATIONSHIP OF 20' DRAINAGE EASEMENT, ACCORDING TO THE PLAT OF MISSION BAY PLAZA, TO THIS PLAT.

Bus SHELTER

0454-002
53
120
MISSION BAY

THIS INSTRUMENT PREPARED BY:
MICHAEL T. KOLODZIEJCZYK
P.L.S. 3864 STATE OF FLORIDA
LAWSON & NOBLE, INC.
ENGINEERS - PLANNERS - SURVEYORS

DRAWING NUMBER
PLAN HOLD CORPORATION • IRVINE, CALIFORNIA
RECORDED BY NUMBER 07548

DRAWING NUMBER
PLAN HOLD CORPORATION • IRVINE, CALIFORNIA
RECORDED BY NUMBER 07548

DRAWING NUMBER
PLAN HOLD CORPORATION • IRVINE, CALIFORNIA
RECORDED BY NUMBER 07548